

# STX Automated Incubators

## STX500

*Small Remote Access Gate at the Rear*  
*Integrated Plate Transport Handling*  
*Broadest Range of Accessories*



StoreX5000 Series

[www.liconic.com](http://www.liconic.com)

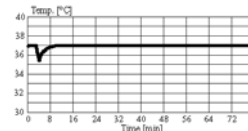
Europe: Liconic AG, Liechtenstein  
Liconic UK Ltd, Manchester

US & International: Liconic Inc. Woburn MA

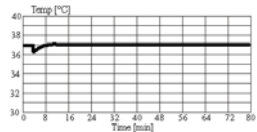
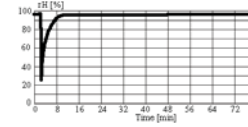
## STX 500

The STX500 with increased 440-500 MTP capacity and newly implemented Flush Gate. The newly developed handling with higher speed, spring loaded instead of counter weight, and flush gate improves the overall performance of the unit.

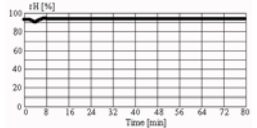
The Flush Gate simplifies integration by omitting any obstacle in the Gate area.



Access through the small robotic gate



Access through full-sized user door



Climate Options				
Type	Temperature	Humidity	Description	Order Nr.
STX500-IC	33..50°C (70°C)	max. 95%	Incubator	9132 00 00
STX500-HC <sup>1)</sup>	04..25°C	max. 90%	Humid Cooler	9132 05 00
STX500-DC2 <sup>1) 3)</sup>	04..25°C	04..50%	Dry Storage	9132 05 10
STX500-HR <sup>1)</sup>	04..50°C (70°C)	90..95%	Humid Wide Range	9132 05 01
STX500-DR <sup>1) 3)</sup>	04..50°C	02..50%	Dry Wide Range	9132 05 03
STX500-AR <sup>2)</sup>	04..50°C	20..90%	Humidity Controlled	9132 05 05
STX500-DF <sup>1)</sup>	-20..0°C <sup>4)</sup>	02..45%	Deep Freezer	9132 05 07
STX500-NC	-	-	No Climate	9132 06 19

<sup>1)</sup> Humidity depends on temperature setting / <sup>2)</sup> Humidity Adjustable / <sup>3)</sup> Adjustable dehumidification / <sup>4)</sup> up to +20°C on request

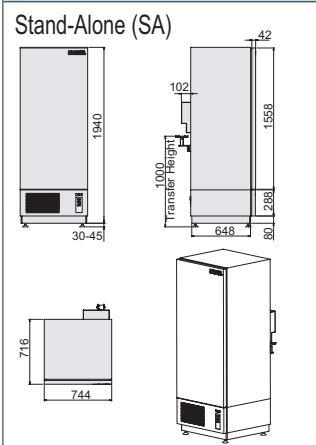
## Options

	Order Nr.	Gassing Option	Order Nr.
Bi-Level, 2 carousel platforms	9122 05 04	Fast CO2 Gassing Option	9118 11 12
High temperature 70°C capability	9122 06 06	Fast N2 Gassing Option	9118 11 13
Bar Code Reader Option	9122 06 03	Fast O2 Gassing Option	9118 11 14
Plate Presence Sensor	9121 00 62	Additional CO2 Gassing Option	9118 11 07
Disposal Tips upgrade kit up to 100mm height	9118 12 23	Additional N2 Gassing Option	9118 11 11
Fast access for time critical applications	9132 06 04	Additional O2 Gassing Option	9118 11 08
N-Way Decontamination	9122 05 28		
Liconel self decontaminating incubator chamber	9132 06 20		
Linear Shaker, Amplitude 1-100mm, 12-300 rpm	9122 05 15		
Side Gate on right side wall	9132 06 00		
Side Gate on left side wall	9132 06 48		
Mirrored Gate Location	9132 06 18		
UCI Universal Interface Communication	9118 11 17		
Steam Injection	9118 11 16		

This model offers high capacity while maintaining the same compact footprint of the STX220. The STX500 is ideal for high throughput labs with space constraints.

Like all members of the StoreX family the STX500 can be equipped with various types of further options and a wide selection of useful accessories. For details please refer to [www.liconic.com](http://www.liconic.com)

## Dimensions



The STX500 is available in three configurations.

Double Decker carousel with standard 540mm cassettes allowing 440 MTP capacity for maximum comfort for manual handling of cassettes. An optimised configuration using 540 mm cassettes on the lower deck and 680 mm cassettes on the upper deck will increase capacity to 500 MTP while maintaining comfort and safety of manual operation.

For maximum capacity 20 cassettes to 1200 mm will top capacity at 530 MTP making it the leader in its class.

## Capacity

Plate Type	Plate Height	Plate capacity of unit		
		Conf.1	Conf.2	Conf.3
NTP (Nanotiter Plates)	5 mm	840	970	1110
	11 mm	560	650	720
MTP (Microtiter Plates)	1536	540	620	680
	17 mm	440	500	530
	22 mm	340	400	430
	23 mm	340	400	430
	24 mm	340	400	430
DWP (Deep Well Plates)	27 mm	300	340	370
	44 mm	200	220	250
	53 mm	160	180	210
DiTi200	66 mm	140	150	170
DiTi1000	104 mm	80	90	110