

# StoreX 40 Series

## Automated Precision Incubators

- + Integrated Plate Handling
- + Stand-alone or Bench-Top
- + Warm or Cooled Versions
- + Temperature Control
- + Humidity Control
- + Gassing Options

LiCONiC is the world leading manufacturer of Precision Robotic Incubators. All our units have a patented combination of a large door on the front for user access and a small robotic transfer gate on the rear. Plates are moved automatically between transfer gate and internal / removable magazines. Combined with pc / serial control, this offers easy robotic access and integration



The unique LiCONiC plate handling systems are application proven in hundreds of systems

Climate fluctuations are minimised during robotic access. Ultra-clean design guarantees minimum cross contamination.

LiCONiC have been refining the design of climate control and plate handling systems for more than 10 years. Hundreds of systems are in worldwide use, opening up new applications to researchers in all areas. Whatever your field, we have a precision climate control system to guarantee you optimal results :

- Standard incubators
- Humid coolers
- Dry coolers
- Humid wide temp.range systems
- Various gassing options



LiCONiC STX 40 Bench-top Automated Precision Incubator will fit in any automated environment



LiCONiC STX 40 Stand-alone Automatic Precision Incubator with top plate transfer gate is ideal for side track applications

12.01



LiCONiC magazines, the worldwide standard in Incubators and other storage systems



## Stable and Precise Climate Conditions

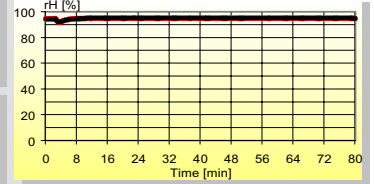
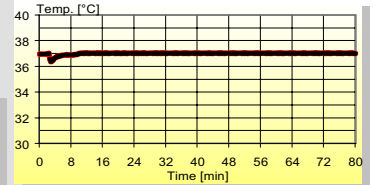
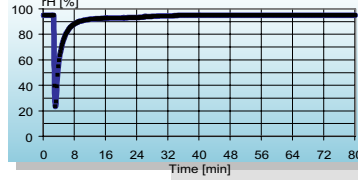
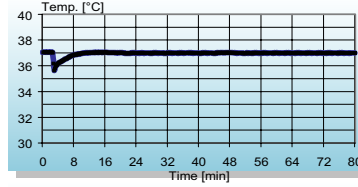


Stable and reproducible climate conditions are the key to success in modern screening applications.

The small StoreX 40 transfer gate guarantees extremely stable and reproducible environmental conditions for your assays. Fastest recovery times allow frequent plate loading and unloading.

Highest accuracy and stability over time is maintained by using sensors monitored by the Swiss Office of Metrology and the Swiss Accreditation Service.

Access through full-sized user door



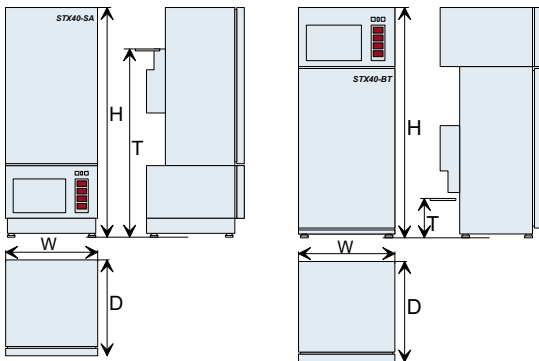
Access through the small transfer gate

Specifications		STX40-IC	STX40-HC	STX40-DC	STX40-DR	STX40-HR
Application		Incubation	Humid Cooling	Dry Cooling	Dry MultiRange	Humid MultiRange
Plate Capacity	Microtiter			44		
	DeepWell			18		
	Nanotiter			84		
Temperature Range (HT)	°C	33..50 (70)	4..20	4..20	4..50	4..50 (70)
Temperature Deviation	°C	+/- 0.2	+/- 0.5	+/- 1	+/-1.5	+/- 0.3
Relative Humidity	%	>95	87..92	<5	<4	87..95
Access Time HS/UHS	sec			<15.3 / <10.3		
Accessfrequency HS/UHS	Acs/h			>120 / >160		
Communication				RS232 V24, 9600Baud, ASCII		
User Software	OS			Win32 / Windows NT/ Windows2000		
Facility Requirements				115/230VAC, 50/60Hz		
Power Consumption	W	450	400	400	700	500

Options / Accessories		STX40-IC	STX40-HC	STX40-DC	STX40-DR	STX40-HR
Cassettes	Customized Pitch	yes	yes	yes	yes	yes
	Stainless	yes	yes	yes	yes	yes
Transfer Stations	Fixed (Portrait)	yes	yes	yes	yes	yes
	Turn (Portrait-Lands.)	yes	yes	yes	yes	yes
	Swap	yes	yes	yes	yes	yes
	Slide	yes	yes	yes	yes	yes
	Lift	yes	yes	yes	yes	yes
	Preheat	yes	yes	yes	yes	yes
Handling	UHS	yes	yes	yes	yes	yes
	DeepWell	yes	yes	no	yes	yes
Gassing	CO2	yes	no	no	no	yes
	Other	yes	yes	yes	yes	yes
Firmware	Plate Scheduler	yes	yes	yes	yes	yes
Special	High Temperature	yes	no	no	no	yes

### Integration

For maximum flexibility the StoreX 40 is available in stand-alone (top transfer gate) and bench-top (bottom transfer gate) versions. The easily accessible transfer station and a standard RS232 connection ensure simple integration into any environment.



Dimensions		STX40-SA	STX40-BT
Width [W]	mm	486	486
Depth [D]	mm	514	514
Height [H]	mm	1285	1180
Transfer Height	mm	1000	200