

NEW StoreX Series **STX220**

*Most Reliable and
Best Serviceable
Automated Storage*



StoreX40 Series

The New StoreX Series

STX220

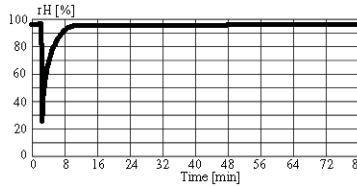
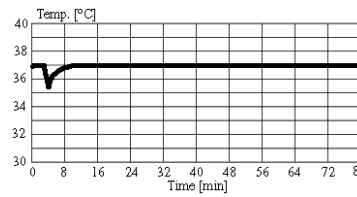
- New Module Slide
- Service Port
- Total Access Cover for Refrigeration
- Serial Interface
- Bi-Directional Communication
- Universal Serial Bus (USB)
- Ethernet Connection (TCP/IP)

The STX220 is the classical 198MTP-size incubator improved with increased 220 MTP capacity and newly implemented Flush Gate.

The newly developed handling with higher speed, spring loaded instead of counter weight, and flush gate improves the overall performance of the unit. This unit can be stacked one on top of the other to give high throughput results.

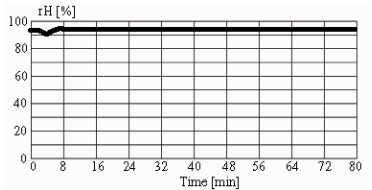
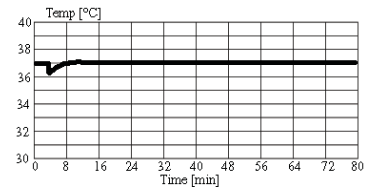
The Flush Gate simplifies integration by omitting any obstacle in the Gate area.

The STX220 instruments are available for integration with the instrument placed on the table surface (BenchTop BT) or for integration with the instrument standing on the floor (StandAlone SA).



Access through full-sized user door

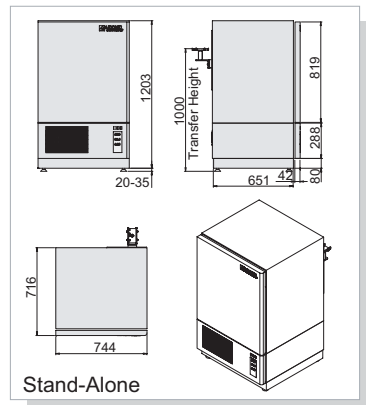
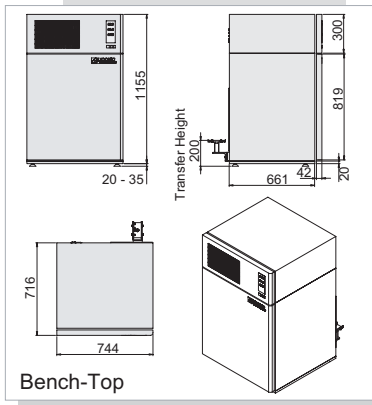
Access through the small robotic gate



| Climate Options | | | |
|-----------------|-----------------|---------|----------------------------|
| STX220-IC | 33..50°C (70°C) | ~95% | Incubator |
| STX220-HC | 04..25°C | ~90% | Humid Cooler |
| STX220-DC | 04..25°C | ~5% | Dry Cooler |
| STX220-HR | 04..50°C (70°C) | 90..95% | Humid Wide Range |
| STX220-DR | 04..50°C | <5% | Dry Wide Range |
| STX220-AR | 04..25°C | 20..90% | Adjustable Humidity Cooled |
| STX220-IC2 | 33..50°C (70°C) | 20..95% | Adjustable Humidity Heated |
| STX220-HT | Tmax.20°C | NA | High Temperature |
| STX220-DF | - | - | Deep Freezer |

| Options | STX 220 IC | STX 220 DC | STX 220 HC | STX 220 HR |
|-----------------------------------|------------|------------|------------|------------|
| Standard up to 50 mm Plate Height | x | x | x | x |
| 16-Bit Digital Climate Controller | x | x | x | x |
| Easy Clean Option | x | x | x | x |
| Shaker Option | x | x | x | x |
| NMC Motor Technology | x | x | x | x |
| 2xHigh speed handling (20s) | x | x | x | x |
| Gassing Options | x | x | x | x |
| BCR PP Sensing | x | x | x | x |

Like all members of the StoreX family the STX220 can be equipped with various types of further options and a wide selection of useful accessories. For details please refer to www.liconic.com



| Capacity | | |
|------------------------------|--------------|------------------------|
| Plate Type | Plate Height | Plate capacity of unit |
| NTP (Nanotiter Plates) | 5 mm | 420 |
| | 11 mm | 280 |
| 1536 MTP (Microtiter Plates) | 12 mm | 270 |
| | 17 mm | 220 |
| | 22 mm | 170 |
| | 23 mm | 170 |
| | 24 mm | 170 |
| DWP (Deep Well Plates) | 27 mm | 150 |
| | 44 mm | 100 |
| | 53 mm | 80 |
| DiTi200 | 66 mm | 70 |
| DiTi1000 | 104 mm | 40 |