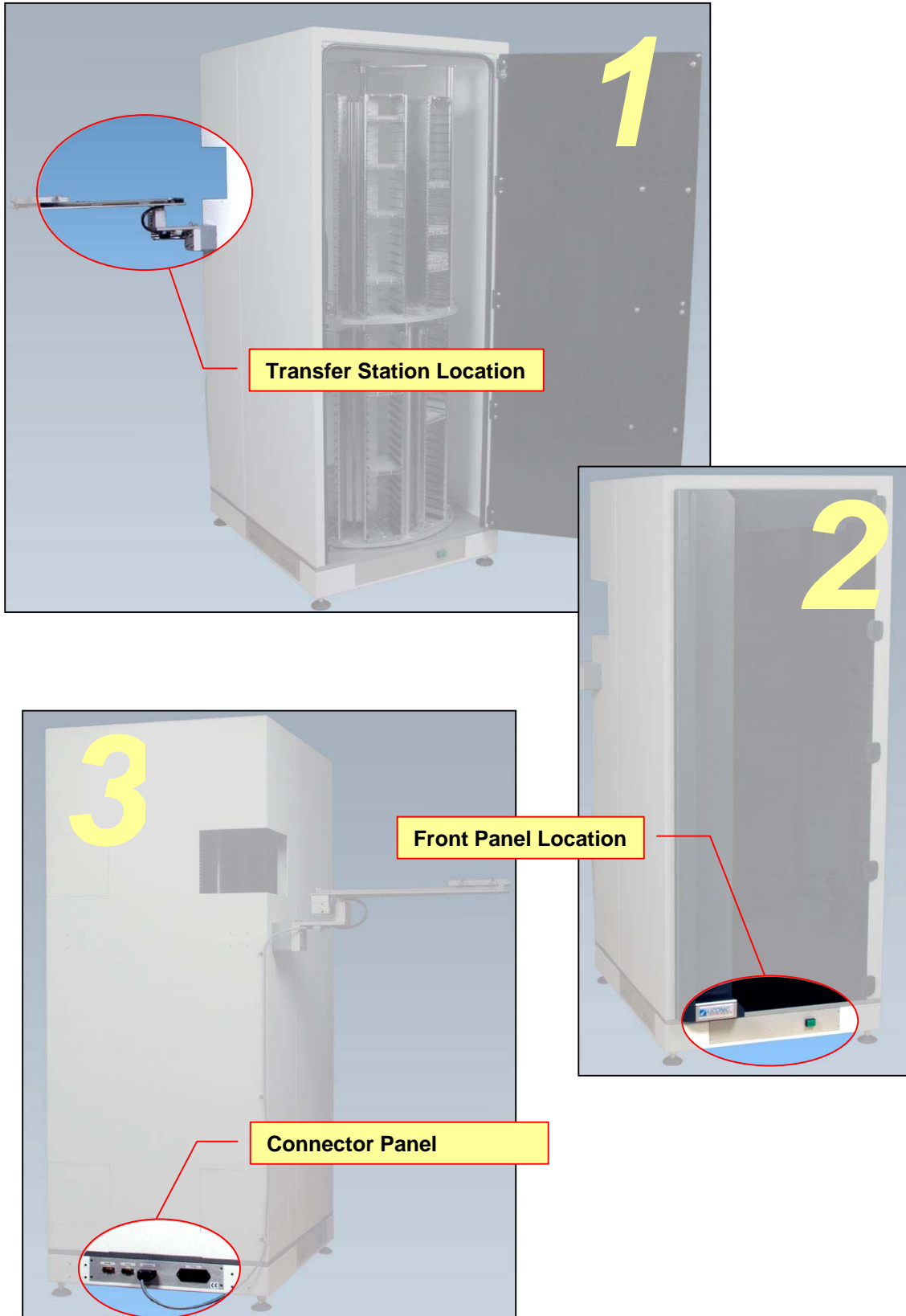
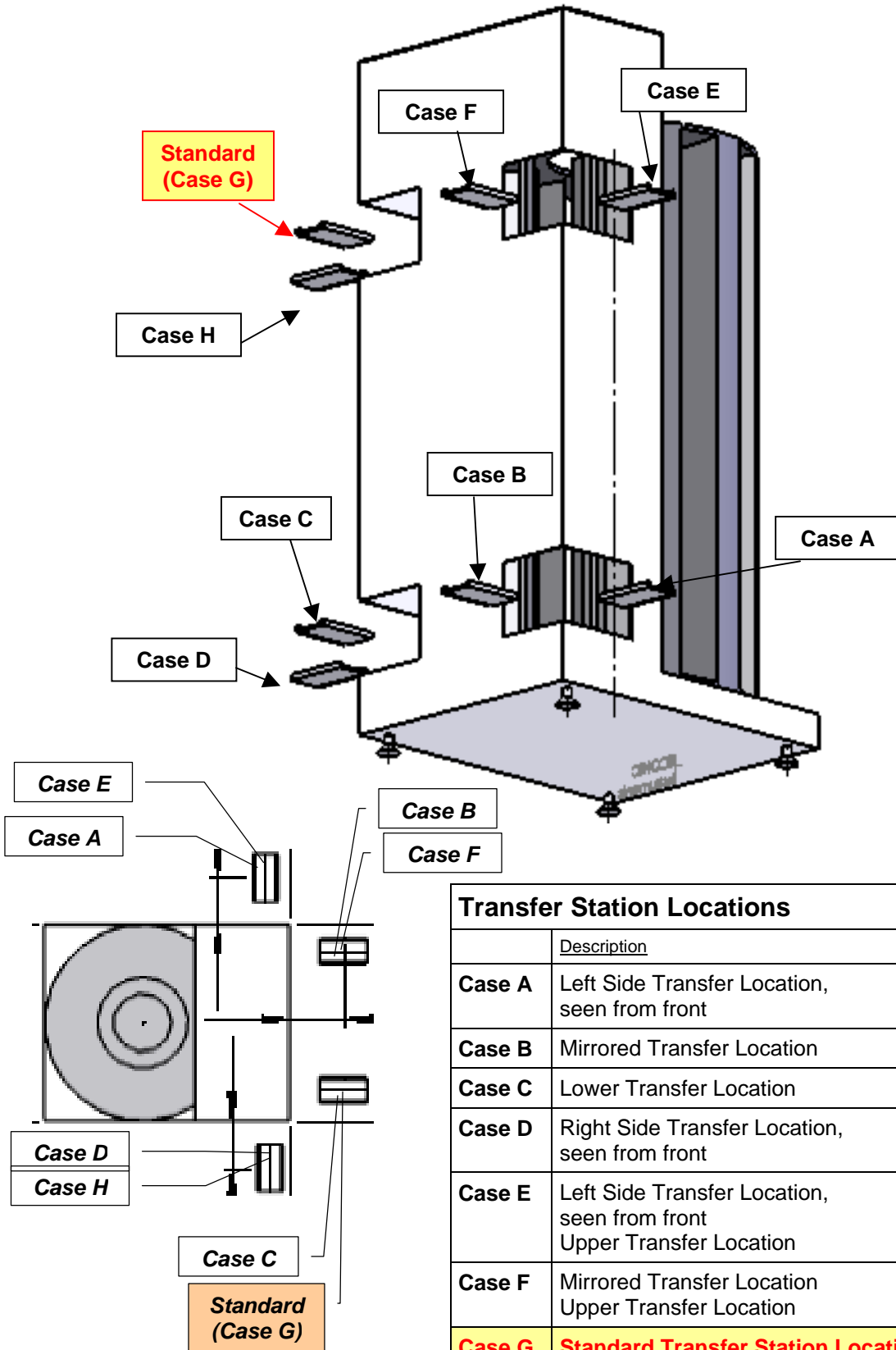


# LPX440 Configuration



# 1. Transfer Station Location



Transfer Station Locations		
	Description	Order Nr.
Case A	Left Side Transfer Location, seen from front	9144 00 88
Case B	Mirrored Transfer Location	9144 00 89
Case C	Lower Transfer Location	9144 01 10
Case D	Right Side Transfer Location, seen from front	9144 00 94
Case E	Left Side Transfer Location, seen from front Upper Transfer Location	9144 00 95
Case F	Mirrored Transfer Location Upper Transfer Location	9144 00 96
Case G	<b>Standard Transfer Station Location</b>	
Case H	Right Side Transfer Location, seen from front Upper Transfer Location	9144 00 98

## 2. Front Panel Location

The diagram illustrates four cases for front panel location on a device. A top view shows a circular device with concentric circles. Red lines indicate the panel location: Case C (top), Case B (left), Case D (right), and Standard (Case A) (bottom). An inset image shows the front panel with the LiCONiC logo and a green button.

Case A	Standard Front Panel Location
Case B	Front Panel on the left side, seen from front
Case C	Front Panel on the back side
Case D	Front Panel on the right side, seen from front

## 3. Back Panel Location

The diagram illustrates four cases for back panel location on a device. A top view shows a circular device with concentric circles. Red lines indicate the panel location: Standard (Case A) (top), Case D (left), Case B (right), and Case C (bottom). An inset image shows the back panel with connectors labeled 'Handling', 'Translation', and '110240'.

Case A	Standard Back Panel Location
Case B	Back Panel on the right side, seen from front
Case C	Back Panel on the front side
Case D	Back Panel on the left side, seen from front

