

# Automated & intelligent Storage **STC7k5-ULT Kiwi**

*Highest Sample Density*  
*Best temperature Stability*  
*All Tube formats*



**-20°C**

**-80°C**



STC-ULT Series

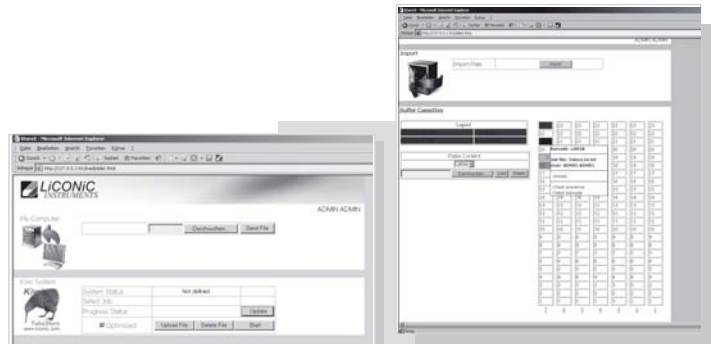
## STC7k5-ULT Kiwi

The STC7k5-ULT is based on the new Liconic trolley design. The STC7k5-ULT is the most reliable and compact -80°C store in its class. It utilises the Liconic chest freezer principle which provides excellent energy efficiency and climate homogeneity. The STC7k5 is by far the market's most efficient -80°C store.

The STC7k5-ULT store incorporates an interface unit that holds an IO-Buffer and the tube selection device. Samples can be loaded either manually into the IO-Buffer or through an integrated liquid handling platform. In all cases samples pass through the interface unit and are then transferred into the -80°C storage chamber. This ensures maximum climate stability of the long-term storage compartment.

The user friendly software incorporates an intuitive and extremely simple to use operator interface. The system is connected to the network and may therefore be accessed remotely.

Features	YOUR Benefits
Temperature stability	Highest Sample Quality
Trolley System	Max. Density with small footprint
Stainless Steel Cassettes	Combination of all Tube Formats
Chest freezer principle	Low Energy Costs Only passive parts in -80°C
2D- and Barcode Function	100% Sample Tracking and Integrity
Proven technical Components	Reliable and robust System
Redundant and Backup Cooling	Highest Sample Guarantee

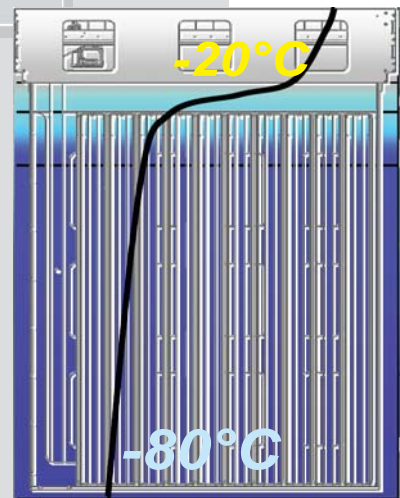
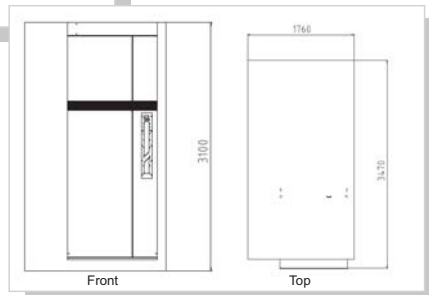


### STC7k5-ULT for following Applications

- DNA/RNA
- Proteins
- Cells
- Serum
- Plasma
- Bacteria
- Sensible bio-liquids.

### Dimensions Storage Compartment

Height	3100 mm
Width	3470 mm
Depth	1760 mm



### Capacity

Plate type	Plate Height	Levels	Racks	Tubes
REMP384	17 mm	54	7560	2.903.040
REMP96-300	22 mm	44	6160	591.360
Abgene 0.3ml / Matrix 0.5 ml	24 mm	41	5740	551.040
Micronic 0,5 ml SrewTop	30 mm	34	4760	456.960
Abgene Twist-Lock 0.5ml	36 mm	29	4060	389.760
Matrix 0.75ml	38 mm	28	3920	376.320
Matrix 0,5 ml Srew Top	41 mm	26	3640	349.440
REMP96-900	44 mm	25	3500	336.000
Micronic 1.1ml SrewTop	48 mm	23	3220	309.120
Abgene 1.2ml	51 mm	22	3080	295.680
Abgene Twist-Lock 1.0ml	52 mm	21	2940	282.240
Matrix 1,0 ml Srew Top	54 mm	20	2800	268.800
Micronic 1,4 ml SrewTop	55 mm	20	2800	268.800

### Climate Conditions

Storage Compartment:	-80°C, dry
Handling Area:	-20°C, dry
Interface Unit:	-20°C, dry

### Standard Options

Redundant Cooling
Backup Cooling via LN2
Three nest Tube Picker / Boxer
Dual Picking Head Option
Bar Code Reader for Racks
2D Code Scanner for Tubes