

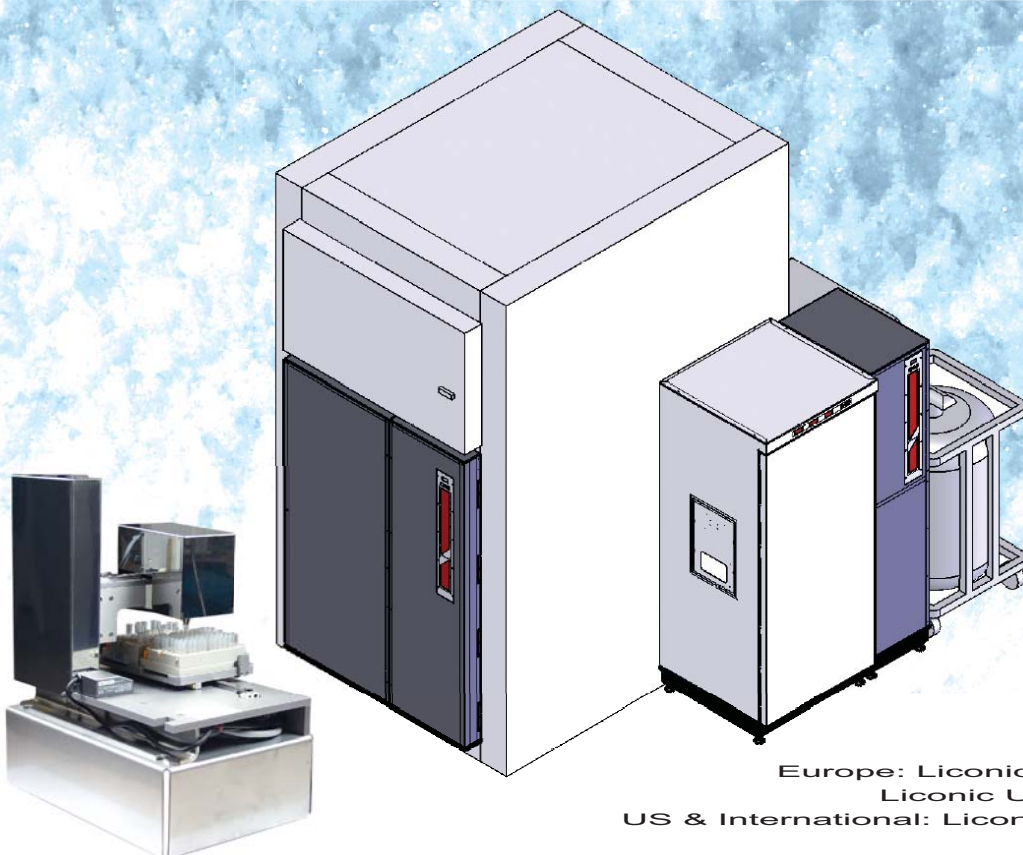
# Automated & intelligent Storage **STC3k5-ULT Kiwi**

*Highest Sample Density*  
*Best temperature Stability*  
*All Tube formats*



**-20°C**

**-80°C**



STC-ULT Series

## STC3k5-ULT Kiwi

The STC3k5-ULT is based on the new Liconic trolley design. The STC3k5-ULT is the smallest reliable and most compact -80°C store in its class. It utilises the Liconic chest freezer principle which provides excellent energy efficiency and climate homogeneity. The STC3k5 is by far the market's most efficient -80°C store.

The STC3k5-ULT store incorporates an interface unit that holds an IO-Buffer and the tube selection device. Samples can be loaded either manually into the IO-Buffer or through an integrated liquid handling platform. In all cases samples pass through the interface unit and are then transferred into the -80°C storage chamber. This ensures maximum climate stability of the long-term storage compartment.

The user friendly software incorporates an intuitive and extremely simple to use operator interface. The system is connected to the network and may therefore be accessed remotely.

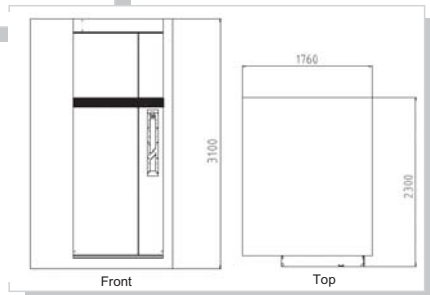
Features	YOUR Benefits
Temperature stability	Highest Sample Quality
Trolley System	Max. Density with small footprint
Stainless Steel Cassettes	Combination of all Tube Formats
Chest freezer principle	Low Energy Costs Only passive parts in -80°C
2D- and Barcode Function	100% Sample Tracking and Integrity
Proven technical Components	Reliable and robust System
Redundant and Backup Cooling	Highest Sample Guarantee

### STC3k5-ULT for following Applications

- DNA/RNA
- Proteins
- Cells
- Serum
- Plasma
- Bacteria
- Sensible bio-liquids.

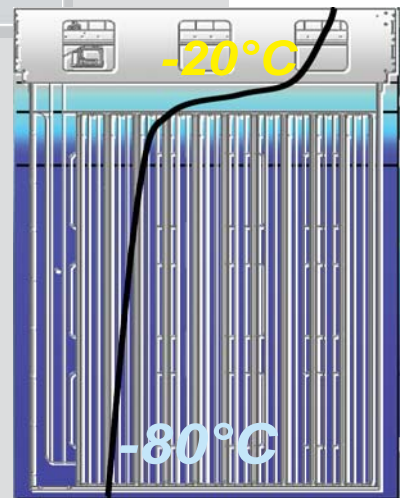
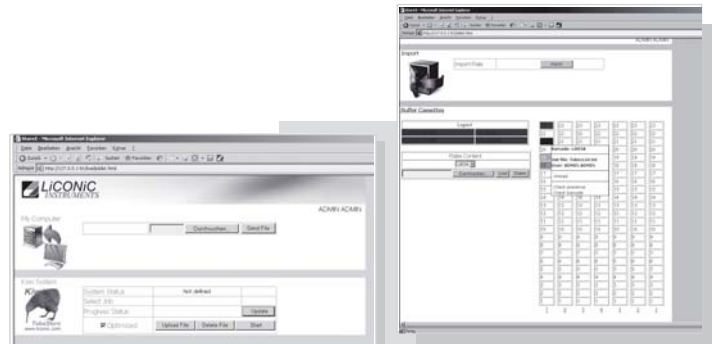
### Dimensions Storage Compartment

Height	3100 mm
Width	2300 mm
Depth	1760 mm



### Capacity

Plate type	Plate Height	Levels	Racks	Tubes
REMP384	17 mm	54	3.240	1.244.160
REMP96-300	22 mm	44	2.640	253.440
Abgene 0.3ml / Matrix 0.5 ml	24 mm	41	2.460	236.160
Micronic 0,5 ml SrewTop	30 mm	34	2.040	195.840
Abgene Twist-Lock 0.5ml	36 mm	29	1.740	167.040
Matrix 0.75ml	38 mm	28	1.680	161.280
Matrix 0,5 ml Srew Top	41 mm	26	1.560	149.760
REMP96-900	44 mm	25	1.500	144.000
Miconic 1.1ml SrewTop	48 mm	23	1.380	132.480
Abgene 1.2ml	51 mm	22	1.320	126.720
Abgene Twist-Lock 1.0ml	52 mm	21	1.260	120.960
Matrix 1,0 ml Srew Top	54 mm	20	1.200	115.200
Micronic 1,4 ml SrewTop	55 mm	20	1.200	115.200



### Climate Conditions

Storage Compartment:	-80°C, dry
Handling Area:	-20°C, dry
Interface Unit:	-20°C, dry

### Standard Options

Redundant Cooling
Backup Cooling via LN2
Three nest Tube Picker / Boxer
Dual Picking Head Option
Bar Code Reader for Racks
2D Code Scanner for Tubes