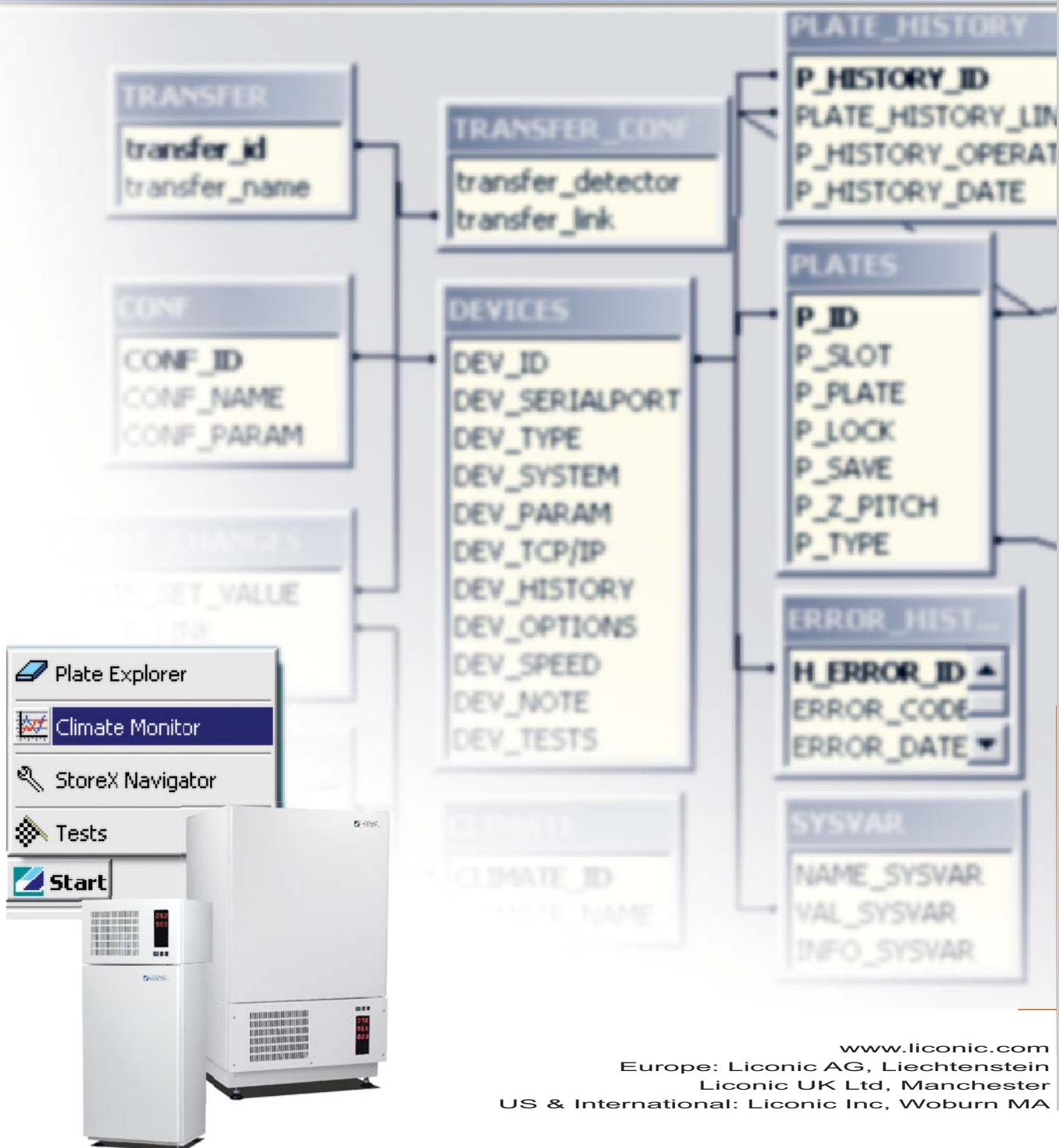


Accessories

STX Driver

TCP/IP Remote Control
Easy to integrate
Graphical user Interface



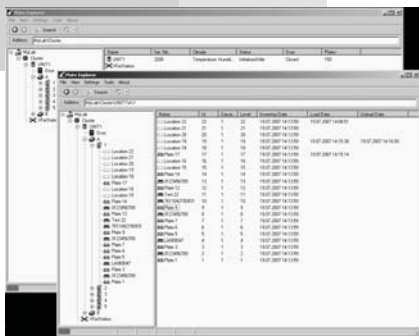
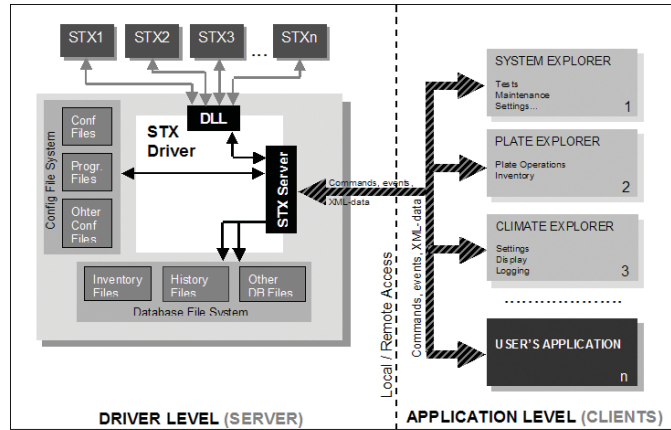
STX Driver

Make your StoreX interface professional looking supporting the latest interfacing technologies in no time. The STX driver package will enhance your user interface by providing the market's most complete and most powerful functionality at minimum programming costs.

The STX driver package includes everything needed to build a sophisticated, yet simple, interface for any plate storage application.

The package includes:

Intuitive and Friendly User Interface
Drag&Drop plate manipulation
Device Communication Tools
Climate managing Tools
Operation Schedule
Test and Diagnostics Module
Error Recovery System
Security System
Events, message and errors logging system



All operations are Drag & Drop. Using simple Mouse Clicks, you navigate plates between positions and manage your system's climate controls.

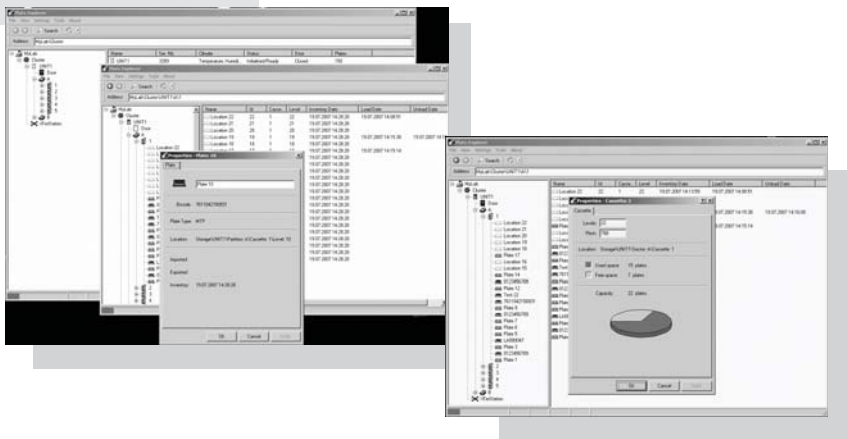
The New Command Set has been optimised using 21 very powerful and straight forward commands.

Other features are:

TCP/IP communication
Remote access capability
Easy client-software integration
Multi-clients device managing
Multi-device compatibility

Specifications:

Server Operation Systems:	Windows 9X/ME/2000/XP/Vista
Clients Operation Systems:	Windows 9X/ME/2000/XP/Vista; Linux OS family; Mac OS
Client Software Development Environment:	C++.NET, C#, VB.NET, VB6, VC++, Borland C++ Builder, Delphi.
STX Driver elements	STX Data-Base, STX Command Library, STX Server, STX GUI



Order Information	Order Nr.
STX Driver	9118 12 48