

Title:	Voltage Selector Power Connectors			ID:
				0055
Date in:	Response:	Model:	Author:	
2007-11-22	2007-11-22	-	CMa	

Power Connectors

This Unit

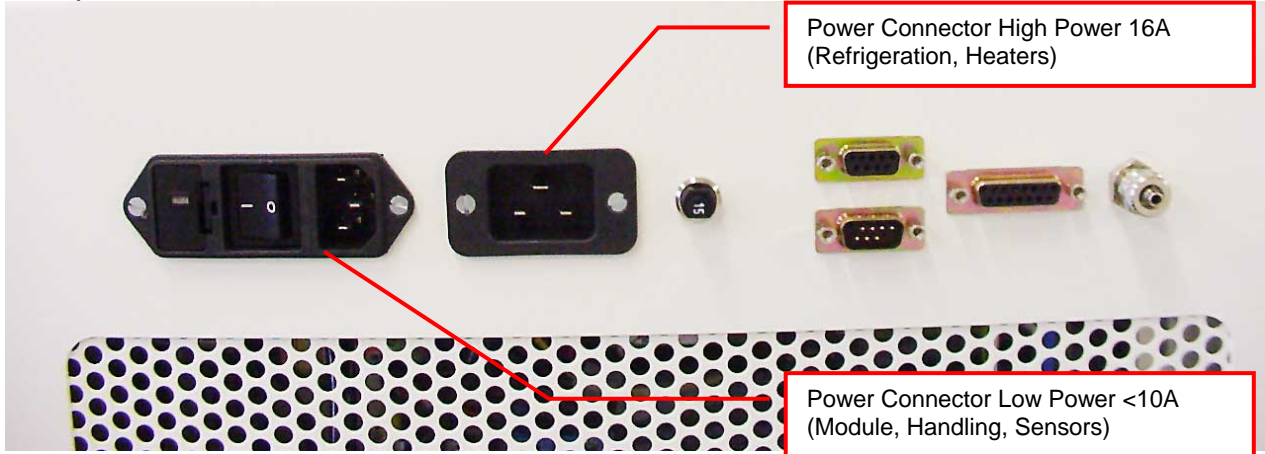
Serial-Nr.

is pre configured for

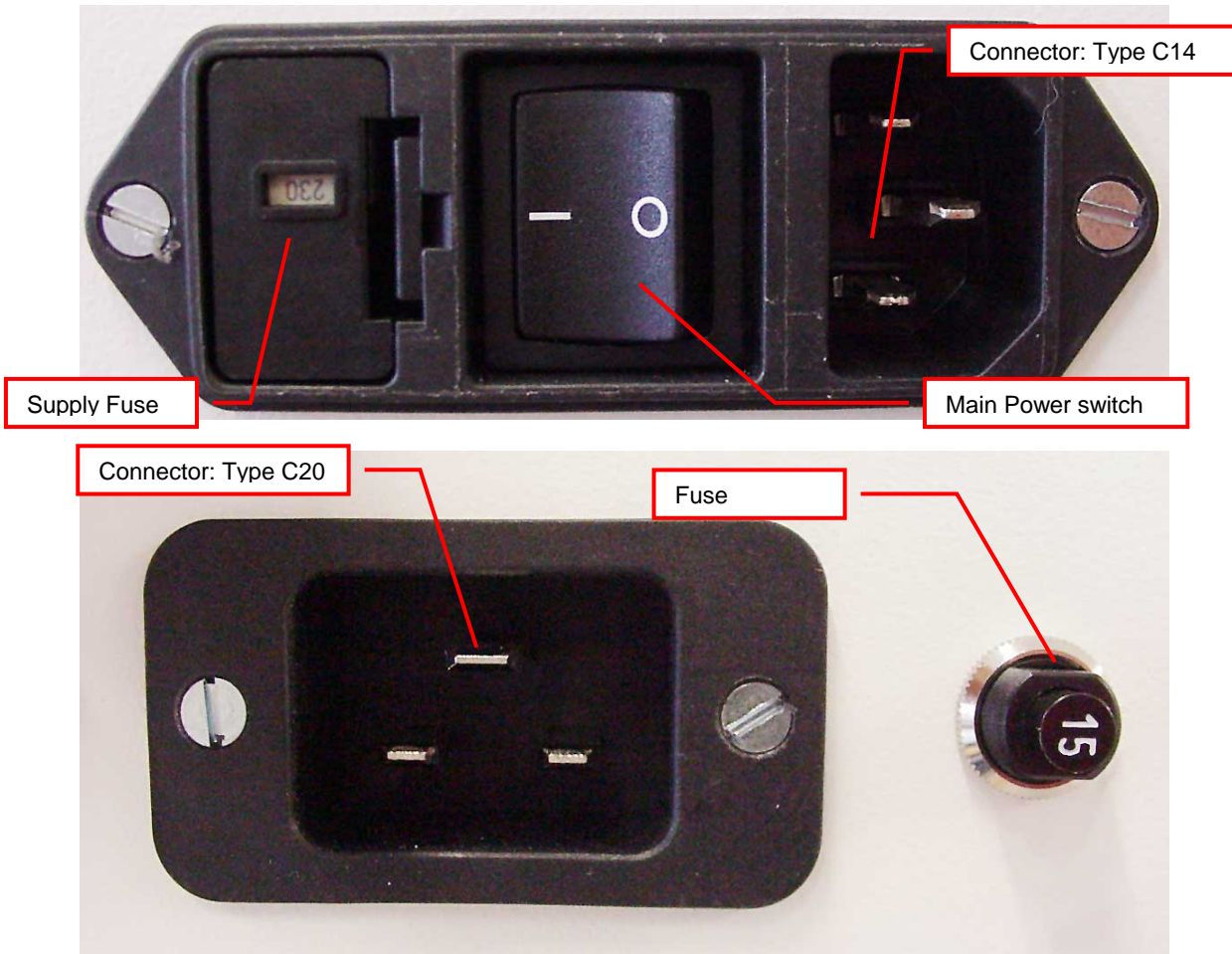
_____ **V**

Connectors

Back panel

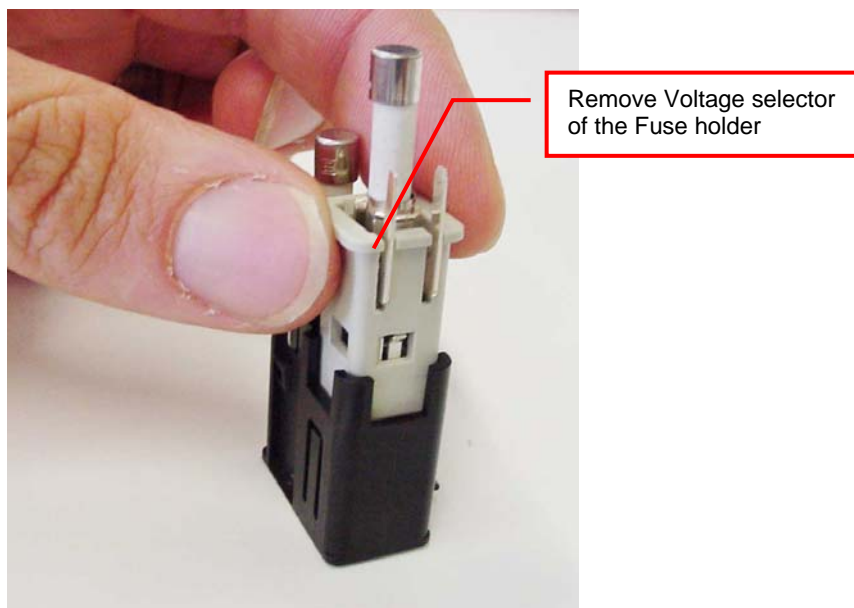
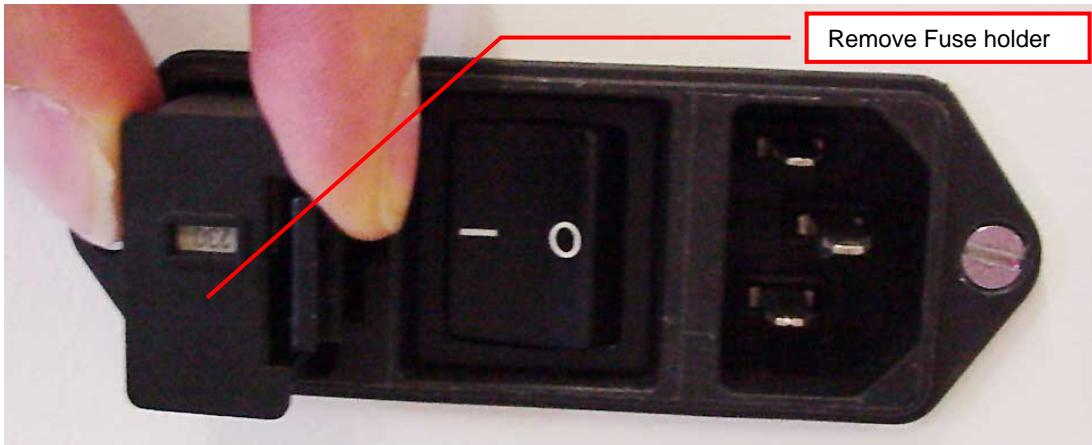
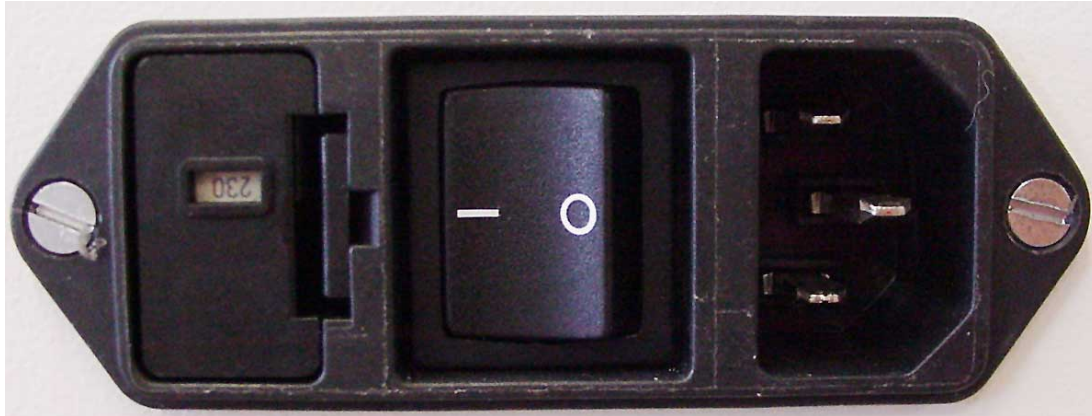


Connectors Details



Switching Supply Voltage

Low Power Supply Voltage Change

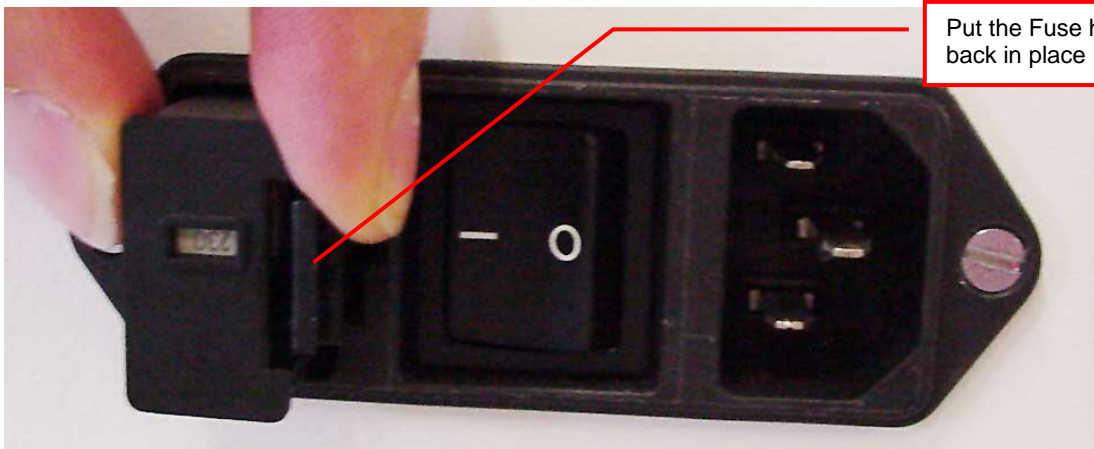




Select appropriate Voltage



Put the Voltage selector back into the Fuse holder: The supply Voltage should be visible in the little window



Put the Fuse holder back in place

High Power Supply Voltage Change

