

200°C
70°C
-20°C

StoreX

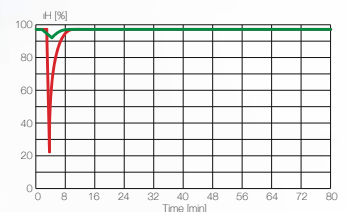
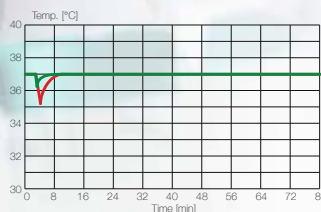
Series

Automated Incubator for Robotic Integration

Automated Incubators

By introducing the first automated incubator, LiCONiC created a new standard in the HTS industry during the early 1990's. The exclusive focus on technology and quality has kept us the leader in the life sciences industry with more innovation and trend-setting solutions ever since. Only LiCONiC Automated Incubators are consequently based on the concept that matches the challenges of handling automation, with the needs of climates at their extremes. Driven by customer satisfaction and application excellence, LiCONiC continues to create novel solutions made for the ever-changing scientific community and to match the market's growing needs.

LiConic StoreX instruments perfectly cope with the challenges keeping temperature and humidity stable in applications with frequent access by a robotic platform that perfectly combines robotic and climate control.



Exclusive use of components that meet industrial standards guarantee ultra long-term reliability and stability even under harsh conditions.

Main Features

- Capacity - 44 over 3000 MTP equivalent capacity
- Compact - smallest footprints in the industry
- Bench-top, stand-alone or under-bench configuration
- Superior environmental conditions by proprietary IR-gas sensor, cassette design, humidity-, and temperature control
- Wide temperature range from -20°C to 200°C
- Fast - loading times down to 6 seconds
- Clean - configurable with Safe Erase decontamination and nWay contamination protection
- Water pan free - sterile and clean humidity injection system eliminates need for water pan
- True orbital shaking - only LiCONiC offers true orbital shaking from 1-6mm

Incubator Series and Product Overview

StoreX Series

The STX-Series is the most widely used and the most complete solution for controlled environmental automated storage in laboratory automation. Flexibility, stability and reliability are the hallmark of the StoreX series of automated incubators. LiCONiC's proprietary technology delivers a robust system for frequent access and optimum environmental control using a variety of labware. MTP, DWP, culture flasks, petri dish and bioreactor tube options can all be accommodated as part of a standard solution range.



STX110



STX44



STX500

STR Series

The STR series is designed for workstation integrations without compromise to the functionality of the STX series. The STR44 and the STR240 deliver the sample through the top surface by an extended lift called „periscope“ straight onto the deck. This makes the instrument fit perfectly under any liquid handler deck or workstation. The STR space saving incubators are designed to be used where space restrictions need to be met. With the star-like design, the robotic delivery system is located in the center of the incubator, passing the labware through the top of the chamber, saving space and minimizing cycle times.



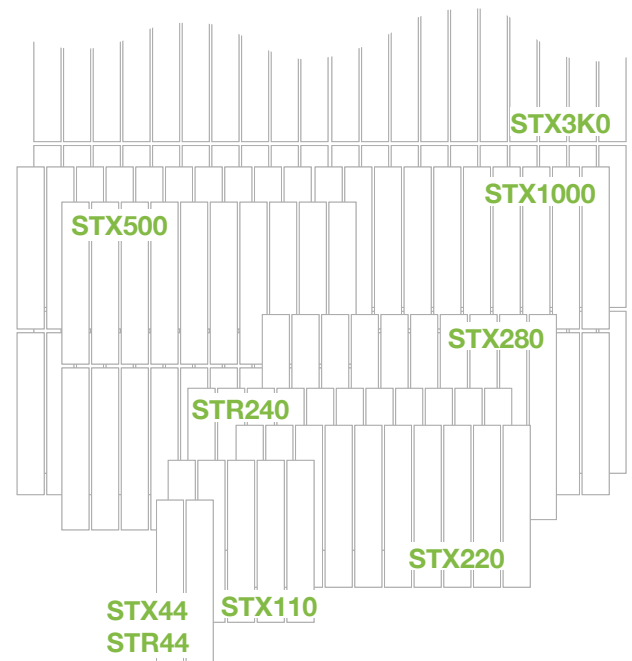
STR240



STR44

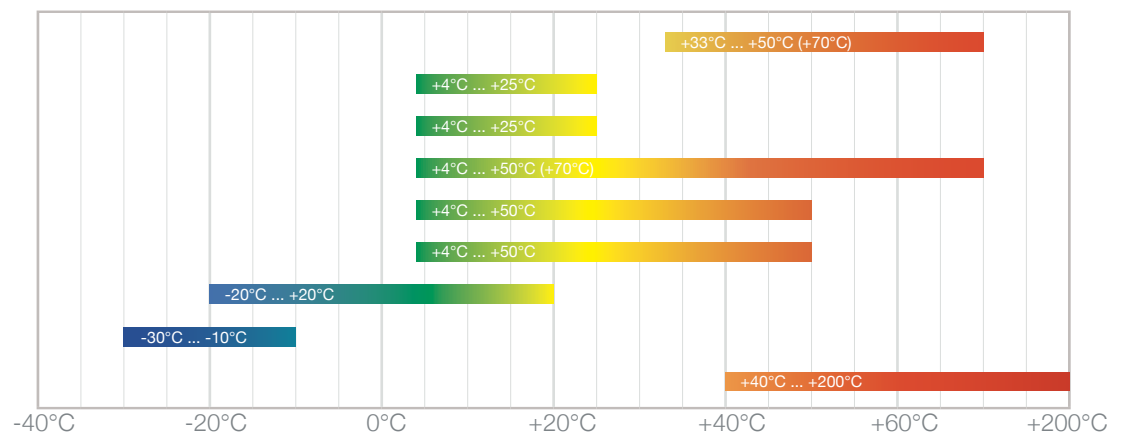
Capacities

Because of the instrument's extreme flexibility in supporting various types of labware, capacity-specifications are normalized to MTP-equivalent size plates assuming 17mm height that includes the plate plus its lid. Capacities of the StoreX-Series instruments range from tiny 44 to capacities exceeding 3000 MTP-equivalent plates.



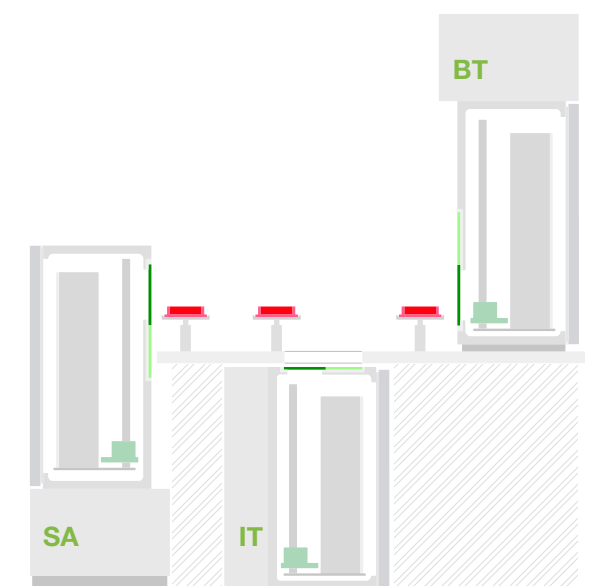
Climate Option from -30°C to +200°C

IC	Incubator
DC2	Dry Storage
HC	Humid Cooler
HR	Humid Wide Range
DR	Dry Wide Range
AR	Humidity Controlled
DF	Deep Freezer
UDF	Ultra Deep Freezer
HTT	Ultra High Temp.



Configurations

LiCONiC incubators and plate hotels have been designed for integration into fully automated laboratory applications. For seamless integration, maximum flexibility has been implemented in the instrument's system design. Over time, multiple product families have been developed that ideally cover specific needs of various integration challenges. Next to the classic bench-top integration (BT), integrations where the instrument stands on the floor (SA) or even integrations where the instrument is located under the platform (IT, STR) become possible. Even more flexibility is added by allowing to freely choose the type and location of the automated exchange interface also known as the transfer-station.



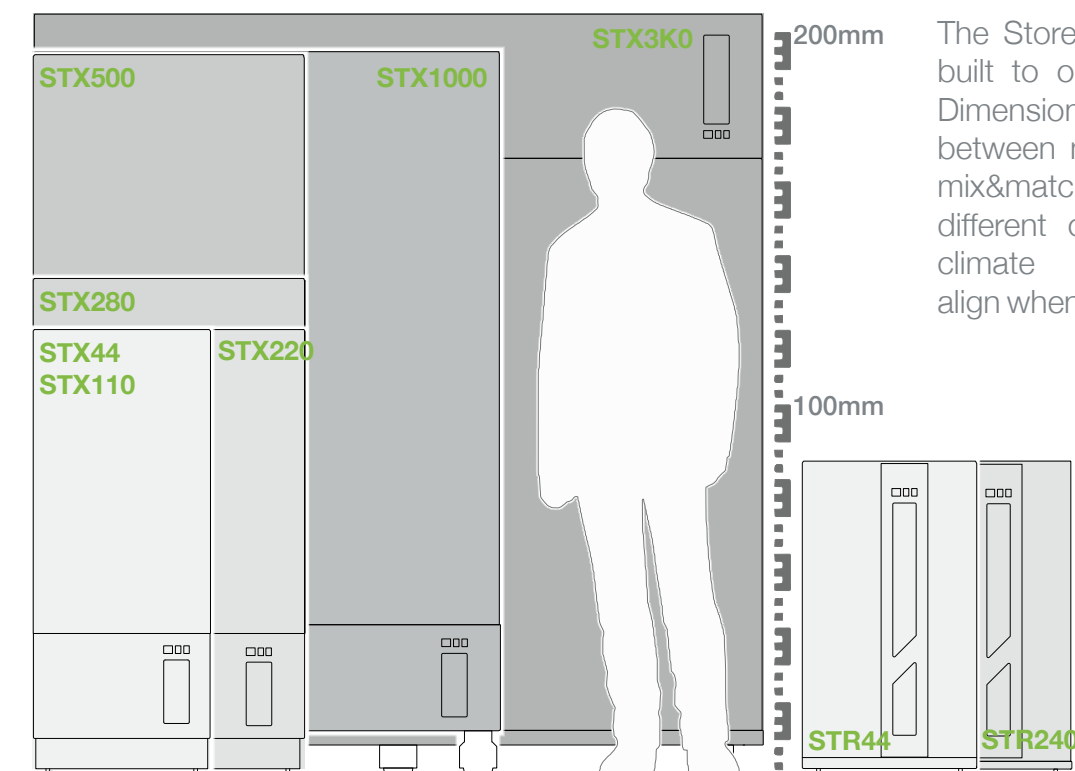
Options

Options	Series	
	STX	STR
Fast Gassing (CO2, N2, O2)	✓	✓
Barcode Reader	✓	✓
n-Way Contamination Protection System	✓	✓
Easy Clean	✓	✓
Liconel Self Decontamination Chamber	✓	✓
Copper Chamber	✓	✓
Steam Injection	✓	✓
Shaking	✓	✓
Side Gate	✓	
Docking Shuttle	✓	✓
Plate Presence Sensor	✓	✓
Petri Dish Capability	✓	✓
Bioreactor Tube Handling	✓	✓
iMotion Intelligent Speed Management	✓	✓
Ultra Fast BCR Speed	✓	✓
Freely Configurable Transfer Location		✓
Dual Transfer Station	✓	✓

Accessories

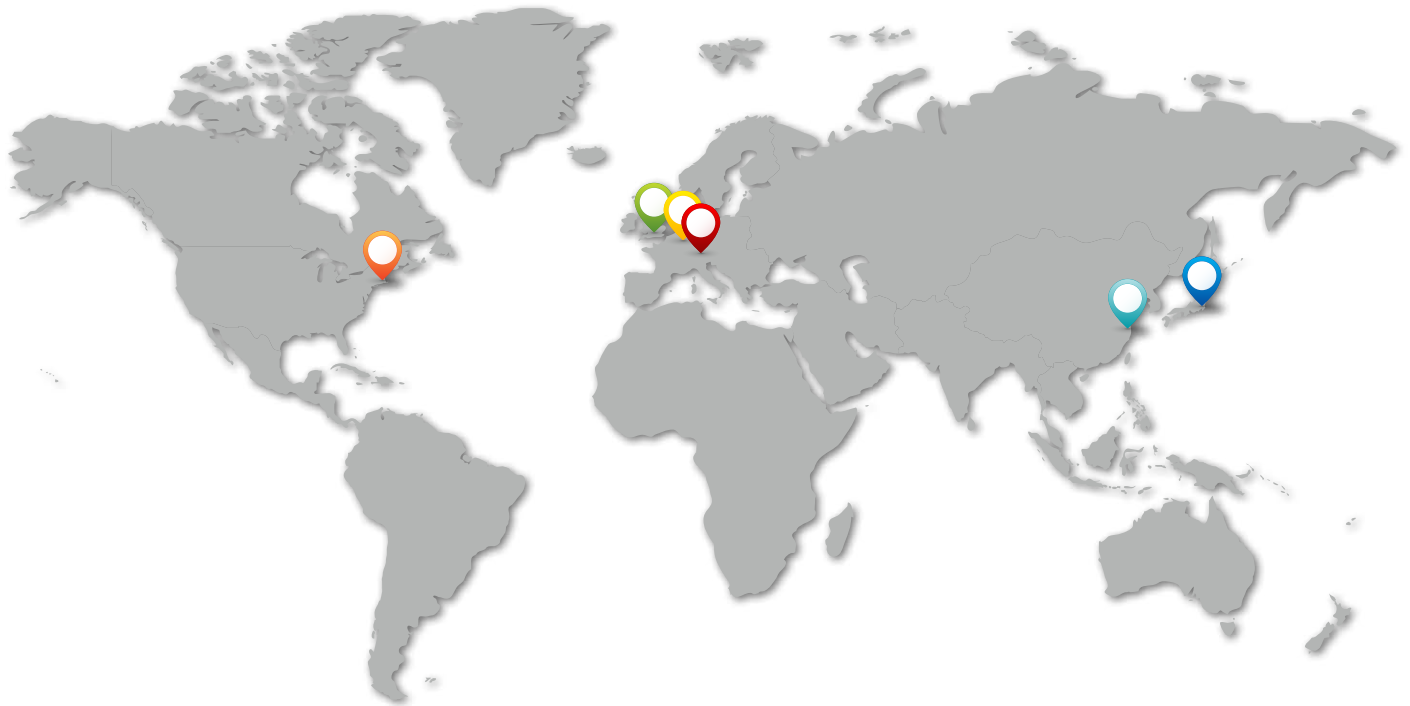
Series		Accessories
STX	STR	
✓	✓	Cassettes
✓	✓	Standard Transfer Station
✓	✓	Swap Station
✓	✓	Active Alignment Transfer Station
✓	✓	Slide Station
✓	✓	Parallel Transfer Station
✓		Lift Station
✓	✓	Turn Transfer Station
✓	✓	Shuttle Transfer Station
✓	✓	Petri Dish Transfer Station
✓		Side Access Slide
✓	✓	Gripper Station
✓	✓	GUI Sample Management Software
✓	✓	Table Interface
✓	✓	Bioreactor Tube Rack
✓	✓	Modular Cascading System

Dimensions



The StoreX-Series instruments are built to optimize work-cell space. Dimensions are kept consistent between models to allow for ideal mix&match. Instruments with different capacity and/or different climate configurations perfectly align when set up next to each other.

Worldwide Presence



CORPORATE LiCONiC AG

LiCONiC AG
Industriestrasse 8-12
9493 Mauren
Principality of Liechtenstein

Phone: +423 37 36 33 9
Fax: +423 37 35 35 9
E-Mail: info@liconic.com
sales@liconic.com
service@liconic.com

LiCONiC Services Deutschland GmbH

Bahnhofsplatz 3
D-56410 Montabaur
Germany

Phone: +49 2602 997 4557
Fax: +49 2602 997 4559
E-Mail: info.de@liconic.com
sales.de@liconic.com
service.de@liconic.com

LiCONiC UK Ltd

BioHub
Alderley Park
Macclesfield
Cheshire, SK10 4TG
United Kingdom

Phone: +44 (0) 1618 752 542
+44 (0) 1618 752 543
Fax: +44 (0) 1618 752 540
E-Mail: info.uk@liconic.com
sales.uk@liconic.com
service.uk@liconic.com

LiCONiC US, Inc.

21-F Olympia Ave
Woburn, MA 01801
USA

Phone: +1 (781) 309-3340
Fax: +1 (781) 537-6173
E-Mail: info.usa@liconic.com
sales.usa@liconic.com
service.usa@liconic.com

LiCONiC Japan K.K.

2-2-15 Daiya Bldg 2F
Hamamatsu-cho, Minato-ku
Tokyo Japan 105-0013

Phone: +81 3 6841 0707
E-Mail: info.japan@liconic.com
sales.japan@liconic.com
service.japan@liconic.com

LiCONiC China Co. Ltd

1-B102, No.3891, Jinxiu Rd
Shanghai (201204),
R.P.China

Phone: +86 186-2156-0603
E-Mail: info.china@liconic.com
sales.china@liconic.com
service.china@liconic.com

Asia:

Phone: +1 (760) 522-2455
E-Mail: info.asia@liconic.com
sales.asia@liconic.com
service.asia@liconic.com



Information within this document is subject to be changed without prior notice. For details please contact our applications at info@liconic.com.
20170807



www.liconic.com